

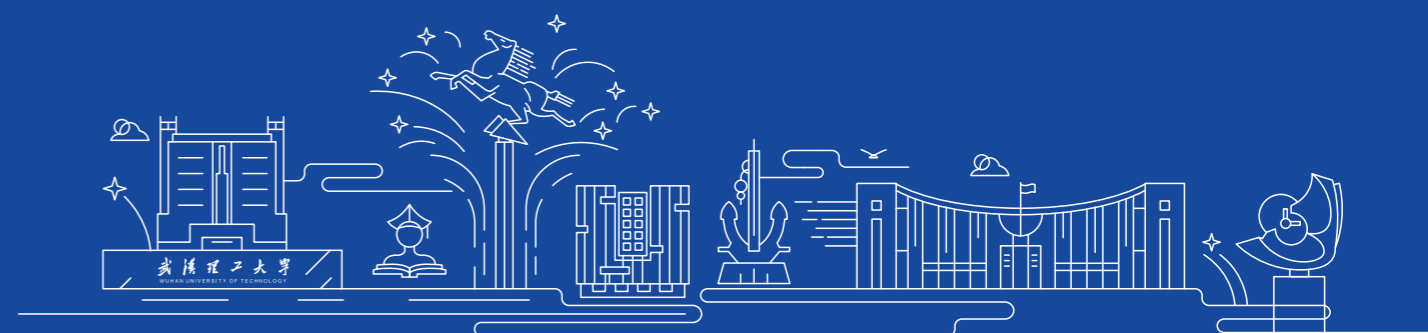


武汉理工大学

Wuhan University of Technology

## CONTACT

- ◎ Address: International Admission Office  
School of International Education  
Wuhan University of Technology  
No.122, Luoshi Road, Wuhan, Hubei Province, China
- ◎ Zip code: 430070
- ◎ Tel: +86-27-87166636 Fax: +86-27-87166636
- ◎ E-mail: [admission@whut.edu.cn](mailto:admission@whut.edu.cn)
- ◎ Website: <http://sie.whut.edu.cn/english/ist/>
- ◎ Apply Online: <http://admission.whut.edu.cn/>



# ONE OF

the Top Universities in China  
the Largest Universities in China  
the Earliest Chinese Universities Recruiting International Students



## Introduction

Wuhan University of Technology (WUT) is one of the leading Chinese universities under the direct administration of the Ministry of Education and one of the universities in the country's construction plan of world-class universities and first-class disciplines. The University began to recruit international students in 1952. WUT is also one of the universities appointed to receive international students under the authority of Chinese Government Scholarship Program. In 2018, over 1,700 international students from over 130 countries studied in the University.

In the past 70 years, WUT has fostered over 500,000 students, maintaining itself the largest scale university for nurturing talents. WUT has established cooperative relations for students exchange and scientific research with more than 190 foreign universities and research institutions from all over the world and invited over 300 international famous scholars to be its strategic scientists, guest professors or honorary professors. More than 230 Joint Research Centers with state and local governments, international institutions and enterprises have been established by the University. From 2010, WUT has obtained 14 National Science and Technology Awards, ranking in the forefront of Chinese higher education institutions.

In 2018, the University was listed in Times Higher Education World University Rankings, QS Asia University Rankings, U.S. News Best Global Universities Rankings and Shanghai Ranking's Academic Ranking of World Universities.

# CONTENTS

- 1.Students & Faculty Numbers
- 2.Undergraduate Programs in Chinese
- 3.Undergraduate Programs in English
- 4.Master Programs in Chinese
- 5.Master Programs in English
- 6.Ph.D. Programs in Chinese & English
- 7.Chinese Language & Culture programs
- 8.English Programs for Exchange Students
- 9.Scientific Research
- 10.Accommodation Information
- 11.Campus Life
- 12.Tuition & Fee Structure
- 13.How to get admission?
- 14.Scholarships we offer



## Students & Faculty Numbers

Students	56,000+
Undergraduates	36,400+
Master Students	16,000+
PhD Students	1,900+
International Students	1,700+
Employees	5,400+

## Schools

- 01.School of Art and Design
- 02.School of Automation
- 03.School of Automotive Engineering
- 04.School of Civil Engineering and Architecture
- 05.School of Computer Science and Technology
- 06.School of Chemistry, Chemical Engineering and Life Sciences
- 07.School of Economics
- 08.School of Energy and Power Engineering
- 09.School of Entrepreneurship
- 10.School of Foreign Language
- 11.School of Information Engineering
- 12.School of International Education
- 13.School of Logistics Engineering
- 14.School of Law, Literature and Sociology
- 15.School of Management
- 16.School of Marxism
- 17.School of Materials Science and Engineering
- 18.International School of Materials Science and Engineering
- 19.School of Mechanical and Electronic Engineering
- 20.School of Navigation
- 21.School of Politics and Administration
- 22.School of Resources and Environment Engineering
- 23.School of Science
- 24.School of Safety Sciences and Emergency Management
- 25.School of Transportation

# Undergraduate Programs in Chinese

---

- ◎ Environmental Design
- ◎ Industrial Design
- ◎ Product Design

- ◎ Science of Animated Cartoon
- ◎ Visual communication Design

- ◎ Automation
- ◎ Electrical Engineering and Automation

- ◎ Energy and Power Engineering
- ◎ Vehicle Engineering
- ◎ Vehicle Service Engineering
- ◎ Computer Science and Technology
- ◎ Internet-of-Things Engineering
- ◎ Software Engineering

- ◎ Building Environment and Energy Application Engineering
- ◎ Project Management
- ◎ Urban and Rural Planning (5 Years)
- ◎ Water Supply and Sewerage Sciences and Engineering
- ◎ Architecture (5 Years)
- ◎ Civil Engineering

- ◎ Applied Chemistry
- ◎ Biotechnology
- ◎ Chemical Engineering and Technology
- ◎ Pharmaceutical Engineering

- ◎ E-commerce

- ◎ Economics
- ◎ Finance and Banking
- ◎ International Economics & Trade

- ◎ Energy and Power Engineering
- ◎ Marine Engineering
- ◎ Petroleum and Gas Storage and Transportation Engineering

- ◎ Electronic and Information Engineering
- ◎ Electronic Science and Technology
- ◎ Information Engineering
- ◎ Telecommunications Engineering

- ◎ Chinese as Second Language
- ◎ Ideological and Political Education
- ◎ Social Work

- ◎ Logistic Engineering
- ◎ Logistic Management
- ◎ Machine Design & Manufacturing and Their Automation

- ◎ Advertisement
- ◎ Editing & Publishing Science
- ◎ Educational Technology
- ◎ Law

- ◎ Business Administration
- ◎ Composite Materials and Engineering

- ◎ Inorganic Non-Metallic Materials and Engineering
- ◎ Macromolecular Materials and Engineering
- ◎ New Energy Material and Devices
- ◎ Accounting
- ◎ Human Resource Management
- ◎ Information Management & Information Systems
- ◎ Marketing
- ◎ Public Administration

- ◎ Material Chemistry
- ◎ Material Formation and Control Engineering
- ◎ Material Physics
- ◎ Materials Science and Engineering

- ◎ Packaging Engineering
- ◎ Industrial Engineering
- ◎ Measuring & Control Technology and Instrumentations
- ◎ Mechanical Engineering
- ◎ Process Equipment and Control Engineering

- ◎ Maritime Management
- ◎ Navigation Technology

- ◎ Geography Information Sciences
- ◎ Mining Engineering
- ◎ Safety Engineering
- ◎ Environmental Engineering

- ◎ Environmental Science
- ◎ Mineral Processing Engineering
- ◎ Human Geography and Urban and Rural Planning

- ◎ Electronic and Information Science and Technology
- ◎ Engineering Mechanics
- ◎ Information and Computing Science
- ◎ Optical Information Science and Technology
- ◎ Statistics

- ◎ Harbours, Water Channels and Coast Engineering
- ◎ Highway and Bridge Engineering
- ◎ Naval Architecture and Ocean Engineering
- ◎ Traffic and Transportation
- ◎ Traffic Engineering



# Undergraduate Programs in English

■ **Note:**  
we can always open new majors in English if more than 8 students in classes.

- Industry engineering
- Mechanical engineering
- Mining engineering
- Computer science engineering
- Civil engineering



**FOR  
Engineering:**

- Business administration
- Logistic management
- International economics and trade



**FOR  
Economics:**

- Chinese as second language

**FOR  
Chinese  
Language:**



# Master Programs in Chinese

- Arts
- Arts Studies
- Design
- Architecture
- Civil Engineering
- Urban Planning
- Biomedical Engineering
- Materials Science and Engineering
- Control Science and Engineering
- Electric Machines and Electric Apparatus
- Power Electronics and Power Drives
- Theory and New Technology of Electrical Engineering
- Chemistry
- Chemical Engineering and Technology
- Pharmaceutical Science
- Environmental Science and Engineering
- Mineral Engineering
- Power Machinery and Engineering
- Vehicle Engineering
- Applied Economics
- Theoretical Economics
- Industrial Engineering
- Instrument Science and Technology
- Mechanical Engineering
- Automotive Application Engineering
- Automotive Electronics Engineering
- Computer Science and Technology
- Software Engineering
- Communication and Transportation Engineering
- Marine Engine Engineering
- Business Administration
- Management science and engineering
- Safety Science and Engineering
- Systems Engineering
- Bridge and Tunnel Engineering
- Logistics Management
- Mechanics
- Naval Architecture & Ocean Engineering
- Road & Railway Engineering
- Structural Engineering
- Transportation Planning & Management
- Electronics Science and Technology
- Information and Communication Engineering
- Logistics Management
- Mechanical Engineering
- Mathematics
- Mechanics
- Physics
- Physics Electronics
- Statistics
- Education Economics and Management
- Education Science
- Journalism and Communication
- Science of Law
- Traffic Information Engineering & Control
- Philosophy
- Sports Education & Training

# Master Programs *in English*

- Arts
- Design
- Automotive Electronics Engineering
- Vehicle Engineering
- Computer Science and Technology
- Software Engineering
- Architecture
- Civil Engineering
- Urban Planning
- Bridge and Tunnel Engineering
- Mechanics
- Naval Architecture & Ocean Engineering
- Road & Railway Engineering
- Structural Engineering
- Transportation Planning & Management
- Chemical Engineering and Technology
- Applied Economics
- Communication and Transportation Engineering
- Marine Engine Engineering
- Information and Communication Engineering
- Logistic Management
- Education Science
- Journalism and Communication
- Law
- Biomedical Engineering
- Materials Science and Engineering
- Industrial Engineering
- Instrument Science and Technology
- Mechanical Engineering
- Environmental Science and Engineering
- Mathematics
- Mining Engineering
- Physics
- Statistics
- Control Science and Engineering
- Traffic Information Engineering & Control
- Business Administration
- Safety Science and Engineering

# Ph.D. Programs *in Chinese & English*

- Arts Studies
- Design Studies
- Automotive Application Engineering
- Power Machinery and Engineering
- Vehicle Engineering
- Computer Science and Technology
- Civil Engineering
- Bridge and Tunnel Engineering
- Communication and Transportation Engineering
- Engineering Mechanics
- Hydrodynamics
- Naval Architecture and Ocean Engineering
- Structural Engineering
- Industrial Economics
- Communication and Transportation Engineering
- Intelligent Traffic Engineering direction
- Marine Engine Engineering
- Power Machinery and Engineering
- Ship electric propulsion and automation technology
- Information and Communication Engineering



- Ideological and political education
- Mechanical Engineering
- Transport Engineering Logistics Management
- Enterprise Management
- Management Sciences and Engineering
- Safety Sciences and Engineering
- Systems Engineering
- Technical Economics and Management
- Materials Sciences and Engineering
- Mechanical Engineering
- Environmental Science and Engineering
- Mining Engineering
- Safety Sciences and Engineering
- Mechanics
- Traffic Information Engineering & Control



# Chinese Language & Culture programs



## Chinese Language Course:

- ◎ Lectures on Chinese History
- ◎ Lectures on Chinese Geography
- ◎ Lectures on Chinese Economy
- ◎ Lectures on Chinese Technology
- ◎ Lectures on Chinese Traditional Thought
- ◎ Lectures on Chinese Education
- ◎ Lectures on Chinese Custom
- ◎ Lectures on Chinese Art: Calligraphy, Traditional Chinese Painting, Tai Chi, Paper-cutting, Local Folk Music, Folk Dance, Local Opera, Peking Opera, Tea Culture, Traditional Chinese Medicine, etc.

## City Tour:

- ◎ Trip to Wudang Mountain
- ◎ Trip to Three Gorges Dam

## Remarks:

1. ANY change is available to this schedule;
2. Negotiations are available about schedule adjustment;
3. Specialized courses for Summer school or Winter school are available.

# English Programs for Exchange Students

Enrollment: All the students

Duration: 1 semester or above

Tuition fees: FREE for our Partner Institutions

Accommodation: as per extra cost in International Dormitory

Application deadline: June 30th for Autumn Semester or Dec 31st for Spring Semester

## ■ Logistics Management

### Core Courses:

Supply Chain Management, Logistics Information System, Operations Management, Logistics System Modeling & Simulation, Sand Table Simulation of Business Operations.

### Tailor-made Courses:

Logistics Economic Geography, Green Logistics, Logistics Finance, International Logistics, ERP Principles and Applications, Port Production Management.

## ■ International Economics & Trade

### Core Courses:

Practice of International Trade, International Marketing, International Investment, International Transportation and Insurance, International Business.

### Tailor-made Courses:

Internet Marketing, International Logistic, International Transportation and Insurance, International Trade of Service, International Business.

## ■ Business Administration

### Core Courses:

Management, Financial Management, Marketing, Human Resource Management, Corporate Strategy Management, Manufacturing and Operation Management.

### Tailor-made Courses:

Corporate Image Management, Logistics and Supply Chain Management, Emotional and Management Communication.

## ■ Mining Engineering

### Core Courses:

Geology, Mining Engineering Surveying, Rock Mechanics, Blasting Engineering, Surface Mining, Underground Mining, Mine & Tunnel Engineering, Mine Lift and Transportation, Mine and Industrial Ventilation & Air-Conditioning.

### Tailor-made Courses:

Blasting Engineering, Mining Systems Engineering, Mine & Tunnel Engineering, Mine and Industrial Ventilation & Air-Conditioning, Mine GIS.



## ■ Civil Engineering

### Core Courses:

Soil Mechanics, Engineering Geology and Rock Mass Mechanics, Foundation Engineering, Civil Engineering Materials, Fundamentals of Concrete Structure Design, Fundamentals of Steel Structure Design, Concrete Structure Design, Steel Structure Design, Bridge Engineering, Highway Subgrades and Pavement Engineering, Civil Engineering Construction.

### Tailor-made Courses:

Earthquake and Wind Resistant Design of Structures, Engineering Project Management.

## ■ Computer Sciences and Technology

### Core Courses:

Discrete structure, Assembly language programming, Principles of Computer Organization, Data Structure, Operating System, Principles of Compiler Construction, Principles of Database Systems, Computer Networks, Advanced Language Programming, and Software Engineering.

### Tailor-made Courses:

JAVA Programming, Visualizing Programming, Software Testing, Introduction to AI and Information Security.

## ■ Industrial Engineering

### Core Courses:

Fundamentals of Mechanical Designing, Operational Research, Fundamentals of Mechanical Manufacturing Technology B, Manufacturing Information System, Operations Management.

### Tailor-made Courses:

Statistical Quality Control, Production System Modeling and Simulation, Logistics Engineering & Facility Layout, Human Factors Engineering, Industrial Engineering Project Management.

## ■ Mechanical Engineering

### Core Courses:

Fundamentals of Mechanical Manufacturing Technology A, Mechanical Designing, Operational Research, Operations Management, Statistical Quality Control, Production System Modeling and Simulation, Logistics Engineering & Facility Layout, Manufacturing Information System, Human Factors Engineering.

### Tailor-made Courses:

Operations Management, Statistical Quality Control, Production System Modeling and Simulation, Logistics Engineering & Facility Layout, Manufacturing Information System, Human Factors Engineering.



# Scientific Research

WUT owns 34 innovative research centers with international leading level including two State Key Laboratories, one State Engineering Laboratory, one National Engineering Research Center and ministerial or provincial level laboratories in the areas of new materials and building materials, transportation and logistics, mechatronics and automobile, information technology, new energy, resources and environmental technology as well as Public Safety and Emergency Management.

The International Joint Laboratory of Advanced Technology for Materials Synthesis and Processing, the Base of International Science and Technology Cooperation in Environmental-friendly Building Materials, the base of International Science and Technology Cooperation on Smart Shipping and Maritime Safety and the International Joint Laboratory of Advanced Technology for Materials Synthesis and Processing and New Materials were established.



# Accommodation Information

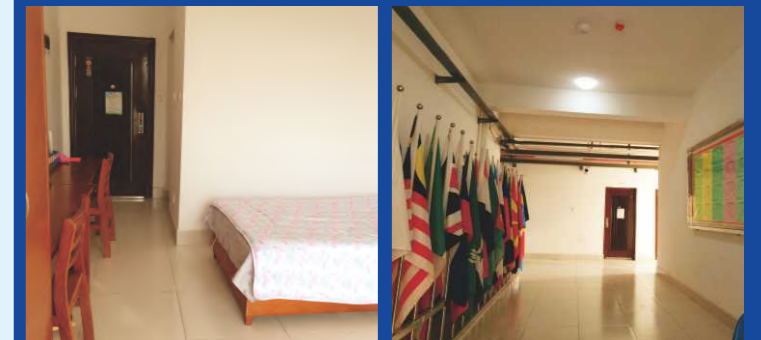
## International Dormitory

### Single Room (12000 RMB per year per person )

- Air conditioner
- Water heater
- Internet access
- One bathroom
- One wardrobe
- One desk
- One chair
- One bed
- Bedding available
- Free water
- Free electricity within 120 kilowatts (charge for extra)

### Twin- Bed Room (8400 RMB per year per person)

- Air conditioner
- Water heater
- Internet access
- One bathroom
- One wardrobe
- Two desks
- Two chairs
- Two beds
- Bedding available
- Free water
- Free electricity within 120 kilowatts for each person (charge for extra)



# Campus Life



# Tuition & Fee structure

Fee Structure of WUT					
Item	Unit	Programs Types		Programs in Chinese (RMB)	Programs in English (RMB)
Tuition	per student per year	Bachelor	Engineering	20000	24000
			Economics& Management	18000	20000
			Art	25000	30000
		Master	Engineering	26000	30000
			Economics& Management	23000	27000
			Art	33000	38000
		MBA		30000	34000
		PhD	Engineering	32000	35000
			Economics& Management	30000	33000
			Art	41000	45000
		Chinese Language		17000	



# How to get admission?

## Qualifications, Application Materials and Contacts

How to apply for Wuhan University of Technology?			
Qualifications, Application Materials and Contacts			
	Undergraduate Programs:	Graduate Programs:	Chinese Language Program
Qualifications	1.High school diploma obtained 2.Valid language proficiency certificate for English or Chinese( HSK OR TOEFL OR IELTS) 3.Age from 18 to 25  Note: No need language certificate for the English mother/ second language applicants.	1. Bachelor Degree for Master applicants, Master Degree for PhD applicants; 2. Valid language proficiency certificate for English or Chinese (HSK OR TOEFL OR IELTS); 3. Recommendations from two professors;  Note: If you are applying for admission under Chinese Government Scholarship, Please apply online at CSC Online Application System  <a href="http://www.csc.edu.cn/studying china">http://www.csc.edu.cn/studying china</a>  The Agency Number of Wuhan University of technology is 10497	High school diploma obtained Age from 18 to 26
Application Materials	1. Application Form (Please register at <a href="http://admission.whut.edu.cn/">http://admission.whut.edu.cn/</a> ) 2. Scan of the passport homepage (including the valid visa page if you are already in China) 3. Statement of purpose / study plan 4. Scan of the original diploma of the highest degree 5. Scan of the academic transcript of the highest degree  *For Ph.D applicants, please prepare a scan of the original diploma and transcript of both Bachelor's and Master's Degree 6. Related language proficiency certificate (HSK OR TOEFL OR IELTS etc.) 7. Two recommendation letters and a WUT professor acceptance letter (only for Master &Ph.D applicants) 8. Physical Examination.  Note: 1. An anther translated copy is needed for documents in languages other than Chinese or English. 2. Self-support applicants, need to pay 500 RMB(or other currencies equivalent) for application fee to the university account (please read the Remarks). 3. CSC applicants need to register at <a href="http://csc.edu.cn/studyingchina">http://csc.edu.cn/studyingchina</a> with the Agency Number of Wuhan University of Technology 10497.		

Deadline	15-Jun	15-Jun	Spring Semester:15 Dec /Autumn Semester: 15 Jun
Contact	Tel: +86- 27-8716 6636 E-mail: <a href="mailto:admission@whut.edu.cn">admission@whut.edu.cn</a>		
Remarks	<b>University's bank account</b> (for application fee only):  <b>**Transfer in RMB:</b>  Name (PAYEE): WU HAN LI GONG DA XUE  Account (A/C): 3202 0067 0900 0475 962  Bank (TO): THE INDUSTRIAL AND COMMERCIAL BANK OF CHINA, HUBEI BRANCH  SWIFT CODE: ICBKCNBJHUB  <b>**Transfer in USD or in other currency:</b>  Name: WU HAN LI GONG DA XUE  Account: 3202 0067 1920 0487 084  Bank to: INDUSTRIAL AND COMMERCIAL BANK OF CHINA HUBEI BRANCH  SWIFT Code: ICBKCNBJHUB		

Please log on <http://admission.whut.edu.cn/>

If you are applying for admission under Chinese Government Scholarship, please apply online at CSC Online Application System.

The Agency Number of Wuhan University of Technology is 10497.





# Scholarships we offer

## Scholarship Categories

- 1.Chinese Government Scholarship–Bilateral Program (BP)
- 2.Chinese Government Scholarship–Chinese University Program (CUP)
- 3.MOFCOM Scholarship

## Scholarship Duration

Program	Specialty Duration	Chinese Learning Duration	Scholarship
Bachelor (taught in Chinese)	4-5 years	1 year	4-6 years
Master (taught in Chinese)	2.5-3 years	1 year	2.5-4 years
Master (taught in English)	2-3 years	—	2-3 years
PHD	4 years	1 year	4-5years

## Scholarship Coverage

- ◎ 1. Tuition and Accommodation Fee on campus
- ◎ 2. Monthly living allowance:
  - Bachelor students: CNY 2,500 per month;
  - Master students: CNY 3,000 per month;
  - PhD students: CNY 3,500 per month.
- ◎ 3. Comprehensive medical insurance

## Requirements for Applicants

- ◎ Applicants applying for a Bachelor degree should hold a high school diploma and be under the age of 25
- ◎ Applicants applying for a Master degree should hold a Bachelor diploma and be under the age of 35
- ◎ Applicants applying for a PhD degree should hold a Master diploma and be under the age of 40



# 1. Chinese Government Scholarship-Bilateral Program (BP)

Bilateral Program includes a full or partial scholarship established by MOE in accordance with educational exchange agreements or consensus between Chinese government and governments of other countries, institutions, universities or international organizations.

**WUT is one of the higher education institutions designated to undertake this program.**

## Who can Apply

Bachelor, master and PhD candidates, general and senior scholar

## Where to Apply

Dispatching authorities in your home country, for example:

1. Educational and cultural offices of Chinese Embassies (Consulates)
2. Department of Education, etc.

## When to Apply

From early January to early April. Please consult the dispatching authorities for the specific deadline of each year.

## How to Apply

1. Complete the online application procedure at CSC Online Application System for International Students, submit online the completed Application Form for Chinese Government Scholarship and print a hard copy.

Please choose WUT as your only Preference of institution.

2. Apply for WUT Pre-admission Letter once recommended by the dispatching authorities as an eligible candidate upon receiving the Award Letter for CGS Candidate.

With this Pre-admission Letter, your choice of WUT will be respected. Or WUT would be replaced with another university in accordance with the admission scheme by China Scholarship Council (CSC).

3. A package of completed application documents must be submitted to the dispatching authorities in your home countries before the deadline. Please check the detailed checklist:

- 1) Application Form for Chinese Government Scholarship;
- 2) Notarized highest diploma & Academic transcripts (notarized Chinese or English translations);
- 3) All non-blanked pages of passport copies;
- 4) A Study Plan or Research Proposal;
- 5) Two Recommendation Letters;
- 6) A CD of your own works (only required for arts students);
- 7) Valid documents of your legal guardians in China (only required for applicants under the age of 18);
- 8) Foreigner Physical Examination Form (photocopy);
- 9) The copy of Pre-admission Letter from designated Chinese university (if available);
- 10) The copy of HSK Certificate (if available).

4. Neither CSC nor WUT is entitled to accept the applications for Bilateral Program directly. Please DO NOT submit hard copies of your application to CSC or WUT directly. Only applications of recommended candidates from dispatching authorities will be considered.

**For supporting your scholarship application, you are welcome to apply for WUT Pre-admission Letter.**

**Pre-Admission Notice could be helpful for winning Bilateral of Category A before 31/03.**



# To whom we issue WUT Pre-admission Letter

WUT Pre-admission Letter is issued by the International Admission Office to support your scholarship/sponsorship application to the other authorities in your home country, such as:

- To the dispatching authority in your home country while applying for Chinese Government Scholarship Bilateral Program.
- To the intuition/authority concerned in your home country for sponsoring your further study in China.

Candidates who have received financial support or scholarship are welcome to contact us for WUT Pre-admission Letter to complete your application procedures.

Please note:

Applicants for Chinese Government Scholarship-Chinese University Program (CUP) DO NOT need the Pre-admission Letter.

Documents Required for Pre-admission Letter

1. Highest diploma or degree certificate; or an official Certificate of Enrollment for the ones still studying at school;
2. Official transcript;
3. Copy of your passport.

**Notes:** applicants should register on the

<http://admission.whut.edu.cn/> and provide the WUT apply number to [admission@whut.edu.cn](mailto:admission@whut.edu.cn) and you will get the pre-admission letter of WUT.

**Tracking the Admission Procedures**

CSC will send, before July 31st, the List of Scholarship Winners, Admission Letter and Visa Application Form for Study in China (JW201) to the Chinese Embassy (Consulate General), who will forward the documents to the dispatching authorities for overseas study or the scholarship winners.

For more details please search:

[http://www.campuschina.org/content/details3\\_74775.html](http://www.campuschina.org/content/details3_74775.html)



## 2. Chinese Government Scholarship-Chinese University Program (CUP)

Chinese Government Scholarship-Chinese University Program is a full scholarship established by Ministry of Education to support Chinese universities to enroll outstanding international students for postgraduate studies in China.

**WUT is one of the higher education institutions designated to undertake this program.**

### Who can Apply

Master and Phd candidates who are living outside China over one year.

### Where to Apply

International Admission Office (IAO), Wuhan University of Technology (WUT).

### When to Apply

From early January to early April.

### How to Apply

1. Complete the online application procedure at CSC Online Application System for International Students (Visit <http://www.csc.edu.cn/studyinchina>), submit online and click “print the application form” for the next step.(The Program **Category is B**, and the Agency No. is **10497.**)
2. Complete the online application procedure in WUT at <http://admission.whut.edu.cn>, and submit the documents required as follows:
  - 1)Application Form for Chinese Government Scholarship (downloaded from Step 1)
  - 2)Highest diploma
  - 3)Academic transcripts
  - 4)A Study Plan or Research Proposal (in Chinese or English)
  - 5)Two Recommendation Letters signed by professor/associate professor (in Chinese or English)
  - 6)Passport
  - 7)CV (including publication list if available)
  - 8)Valid Language Proficiency Certificate (if available)
  - 9)Acceptance Letter from the professor/associate professor of WUT
  - 10)Foreigner Physical Examination Form (not required for applicants in China)







Notes:

1. **Acceptance Letter** by the professor/associate professor of WUT will be required, please download at [http://sie.whut.edu.cn/english/ist/download/201901/t20190108\\_351541.shtml](http://sie.whut.edu.cn/english/ist/download/201901/t20190108_351541.shtml)
2. Hard copies of documents are unacceptable
3. Candidates should also register at WUT admission system at admission.whut.edu.cn

For more details please search:

[http://www.campuschina.org/content/details3\\_74779.html](http://www.campuschina.org/content/details3_74779.html)

Application	Chinese Government Scholarship	
	Bilateral Program(BP)	Chinese University Program(CUP)
<b>WHO</b>	Bachelor's Degree Candidate Master's Degree Candidate Doctoral Degree Candidate General Scholar Senior Scholar Chinese Language Student※	Master Degree Candidate PhD Degree Candidate
<b>WHERE</b>	Dispatching authorities in your home country, for example: ※ 1.Educational and Cultural Office of Chinese Embassy (Consulate); 2. Department of Education, etc.	International Admission Office, Wuhan University of Technology
<b>WHEN</b>	From late December to early April. ※	From January 1 to March 31
<b>Agency Number</b>	Consult the dispatching authorities for overseas study at your home country	10497
<b>Tips</b>	<ul style="list-style-type: none"> <li>-Consult the dispatching authorities for overseas study at your home country directly.</li> <li>-WUT would like to provide pre-admission letter if necessary.</li> <li>-Do not send any application to WUT nor China Scholarship Council (CSC).</li> </ul>	<ul style="list-style-type: none"> <li>-Online application ONLY.</li> <li>-Deposit fee: 500 RMB (NON-REFUNDABLE).</li> <li>-Acceptance Letter by the professor/associate professor from WUT will be required.)</li> <li>-Pre-admission Letter is NOT required for CUP applicants.</li> </ul>

## 3. MOFCOM Scholarship

MOFCOM Scholarship is set up by Ministry of Commerce of People's Republic of China to further strengthen the communication and cooperation between China and other countries as well as to develop talents for developing countries. Starting from 2015, MOFCOM Scholarship mainly sponsors the young and the middle-aged talents from recipient countries to pursue their postgraduate degree education in China and entrusts China Scholarship Council to administer the Scholarship.

**WUT has been designated as one of 26 universities to accept scholarship students in the Master and PhD programs:**

### Who can Apply

Master and PhD candidates

### Where to Apply

The Economic and Commercial Counselor's Office (**ECCO**) of the Chinese Embassy in your country

### When to Apply

From early January to early April.

**Program Category Type A    Agency Number of ECCO 00010**

### Related Majors for MOFCOM (27)

**Master programs (16):** Business Administration, Enterprise Management, Applied Economics, Management science and engineering, Computer Science and Technology, Civil Engineering, Mining Engineering, Mechanical Engineering, Vehicle Engineering, Communication and Transportation Engineering, Information and Telecommunication Engineering, Materials Sciences and Engineering, Biomedical Engineering, Environmental Science and Engineering, Law, Physics.

**PHD programs (11):** Industrial Economics, Management science and engineering, Computer Science and Technology, Civil Engineering, Mining Engineering, Mechanical Engineering, Vehicle Engineering, Communication and Transportation Engineering, Information and Telecommunication Engineering, Materials Sciences and Engineering, Environmental Science and Engineering.



### How to Apply

Step 1: Visit <http://www.csc.edu.cn/laihua> or [www.campuschina.org](http://www.campuschina.org) and click “Application Online for International Students” .

Step 2: Read “Tips for online application” carefully before clicking “NEXT” to the registration page.

Step 3: After registration, log in with your user name and password. Click “Application Forms” and choose “MOFCOM Scholarship” .

Step 4: Put 00010 as your Agency Number.

Step 5: Please fill in all the required information honestly, correctly and completely following the navigation bars on the left of the page.

Applicants are required to select a discipline before choosing their majors. Please refer to the Disciplines Index, which could be downloaded from the button “Help” , if you have any doubt about the disciplines and majors.

Step 6: After completing the application form, please click “Preview” and check your Application Form carefully before submitting it. Click “Confirmation of Submit” in the upper right corner to submit your Application Form.

Step 7: Download the completed Application Form by clicking “Download Application” and print two hard copies.

Step 8: Prepare other supporting documents as required and send the full package of application documents (two sets of hardcopies) to the Economic and Commercial Counsellor's Office (ECCO) of the Chinese Embassy.

Step 9: You can make changes to your application by clicking” Retrieve Application” on the left of the page. But you have to make sure to submit it again by clicking” Confirmation of Submit” after finishing all the changes. Otherwise, the retrieved application will become invalid and your new application will not be accepted either.

Please use Internet Explorer (6.0 or 7.0). Menu selection functions may not work in other browsers.

Only Chinese and English are accepted for the online application.

**For more details please search: [http://www.campuschina.org/content/details3\\_343888.html](http://www.campuschina.org/content/details3_343888.html)**